

Families of Coleoptera: beetles/weevils



Dr. Vera Krischik
Department of Entomology
University of Minnesota

Families of Coleoptera: beetles/weevils

Order Coleoptera -- Beetles

Suborder Adephaga

First abdominal sternite *divided* by hind coxae

Superfamily Caraboidea

Cicindelidae -- tiger beetles

Carabidae -- ground beetles

Dytiscidae -- predaceous diving beetles

Superfamily Gyrinoidea

Gyrinidae -- whirligig beetles

Families of Coleoptera: beetles/weevils

Suborder Polyphaga

First abdominal sternite *entire*, not divided by hind coxae

Superfamily Hydrophiloidea

Hydrophilidae -- water scavenger beetles

Superfamily Staphylinoidea

Silphidae -- carrion beetles

Staphylinidae -- rove beetles

Families of Coleoptera: beetles/weevils

Suborder Polyphaga

Superfamily Cantharoidea

Cantharidae -- soldier beetles

Lampyridae -- lightningbugs or fireflies

Superfamily Cleroidea

Cleridae -- checkered beetles

Dermestidae--carpet beetles

Superfamily Elateroidea

Elateridae -- click beetles

Buprestidae -- metallic wood-boring beetles

Families of Coleoptera: beetles/weevils

Superfamily Cucujoidea

Coccinellidae -- ladybird beetles

Superfamily Meloidea

Meloidae -- blister beetles

Superfamily Tenebrionoidea

Tenebrionidae -- darkling beetles

Superfamily Bostrichoidea

Superfamily Scarabaeoidea

Passalidae -- bessbugs

Scarabaeidae -- scarab and dung beetles

Families of Coleoptera: beetles/weevils

Superfamily Cerambycoidea

Cerambycidae -- long-horned beetles

Superfamily Chrysomeloidea

Chrysomelidae – leaf and flea beetles/
rootworms

Superfamily Curculionoidea

Curculionidae -- weevils or snout beetles

Scolytidae -- bark and pine bark beetles

Families of Coleoptera: beetles/weevils

Suborder Adephaga

Cicindelidae -- tiger beetles

- Near sand, larvae called doodle bugs
- Predators



Paul M. Choate

Families of Coleoptera: beetles/weevils

Suborder Adephaga

Carabidae -- ground beetles

- Nocturnal; long lived adults
- Predators



Families of Coleoptera: beetles/weevils

Suborder Adephaga

Dytiscidae -- predaceous diving beetles

- Aquatic; diving
- Predators



Families of Coleoptera: beetles/weevils

Suborder Adephaga

Gyrinidae -- whirligig beetles

- Aquatic; on water surface
- Predators



Families of Coleoptera: beetles/weevils

Suborder Polyphaga

Hydrophilidae -- water scavenger beetles

- Aquatic; on water surface
- Predators



Families of Coleoptera: beetles/weevils

Suborder Polyphaga

Silphidae -- carrion beetles

- Carrion feeders; guard young; defend carcasses
- Carry mites



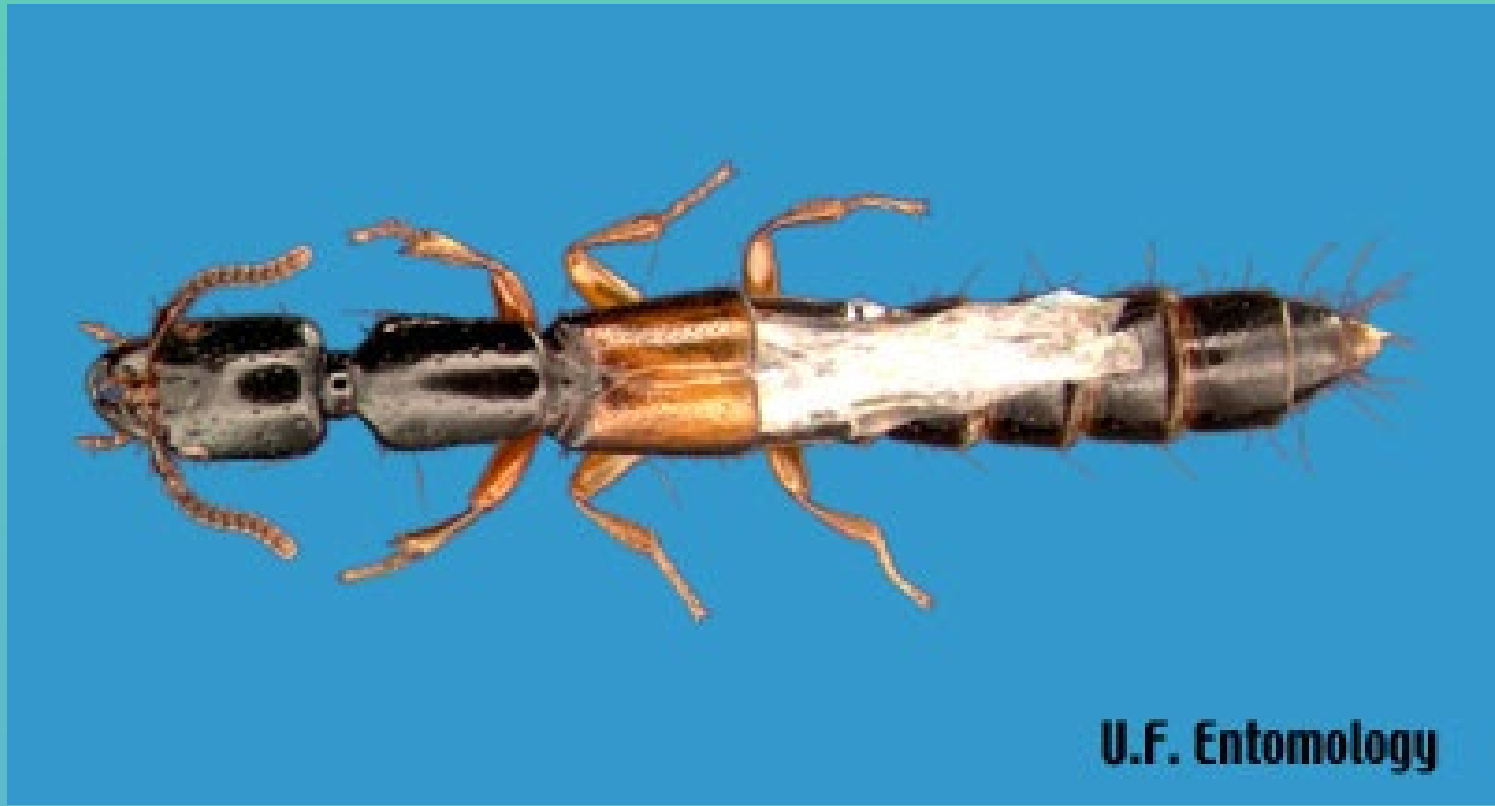
James L. Castner, U. Fla. Ent. Dep.

Families of Coleoptera: beetles/weevils

Suborder Polyphaga

Staphylinidae -- rove beetles

- Nocturnal
- Predators



Families of Coleoptera: beetles/weevils

Suborder Polyphaga

Cantharidae -- soldier beetles

- Adults on flowers/ predators; larvae predators in soil



Families of Coleoptera: beetles/weevils

Suborder Polyphaga

Lampyridae -- lightningbugs or fireflies

- Adults predators; larvae predators in soil



J. E. Lloyd



J. E. Lloyd

Families of Coleoptera: beetles/weevils

Suborder Polyphaga

Cleridae -- checkered beetles

- Predators under bark; feed on bark beetles



Families of Coleoptera: beetles/weevils

Suborder Polyphaga

Dermestidae -- carpet beetles

- Adults feed on pollen, animal dander, wool, grain; larvae feed on animal dander, wool, grain
- Scavengers



Families of Coleoptera: beetles/weevils

Suborder Polyphaga

Elateridae -- click beetles

- Under bark, feed on fungus



James L. Castner, U. Fla. Ent. Dep.



David Deiss, League City, Texas

Families of Coleoptera: beetles/weevils

Suborder Polyphaga

Buprestidae -- metallic wood-boring beetles/ flatheaded borers

- Adults feed on leaves, bark; larvae in sapwood



Families of Coleoptera: beetles/weevils

Suborder Polyphaga

Cerambycidae -- long-horned beetles; roundheaded borers

- Larvae in heartwood
- Adults feed on bark

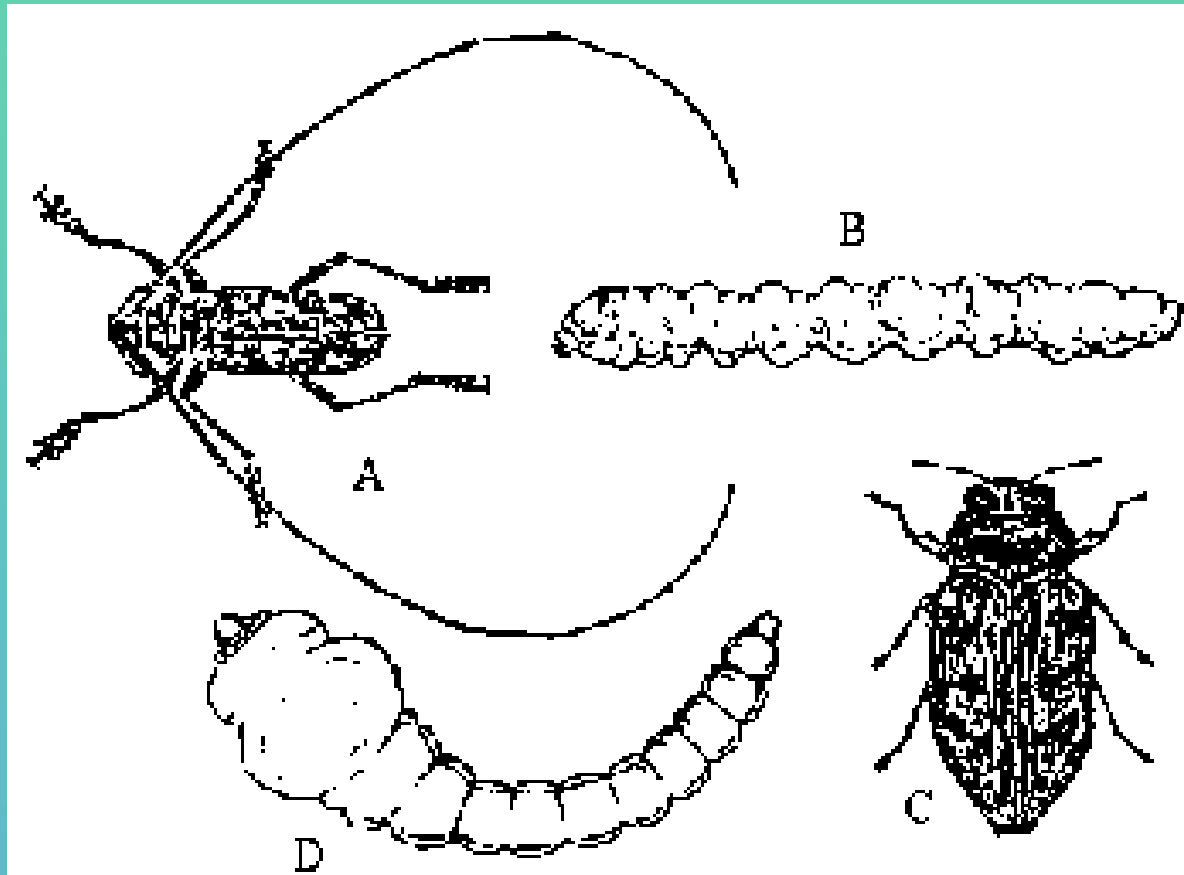


Banded ash borer, *Neoclytus caprea*.
Jim Solomon, USDA Forest Service.

Buprestidae -- metallic wood-boring beetles/
flatheaded borers

Cerambycidae -- longhorned beetles/
Roundheaded

borers



Longhorned beetle (A) and its roundheaded woodborer larva (B). Metallic woodboring beetle (C) and its flatheaded woodborer larva (D).

Buprestidae -- metallic wood-boring beetles/ flatheaded borers



Cerambycidae -- longhorned beetles/ roundheaded borers



Name/Common Hosts/Flight periods

METALLIC WOOD BORERS

Chrysobothrus femorata, Flatheaded apple-tree borer:
Apple, maple, *Populus*, hardwood, June-Aug.

Agrilus anxius, Bronze birch borer:
Birch, June-July.

LONGHORNED BEETLES

Plectodera scalator, Cottonwood borer:
Populus, willow, July-Aug.

Megacyllene ribiniae, Locust borer:
Black locust, Aug.-Sept.

Saperda calcarata, Poplar borer:
Aspen, poplars, willow June-Aug.

Saperda candida, Roundheaded apple-tree borer:
Apple, July-Sept.

Families of Coleoptera: beetles/weevils

Suborder Polyphaga

Coccinellidae -- ladybird beetles

- Predators



Families of Coleoptera: beetles/weevils

Suborder Polyphaga

Meloidae -- blister beetles

- Pollen feeding; leaf feeding



Families of Coleoptera: beetles/weevils

Suborder Polyphaga

Tenebrionidae -- darkling beetles

- Scavengers



Families of Coleoptera: beetles/weevils

Suborder Polyphaga

Passalidae -- bessbugs

- Decaying wood, adults mate on logs/ don't feed, can hiss



Families of Coleoptera: beetles/weevils

Suborder Polyphaga

Scarabaeidae -- scarab and dung beetles

- Dung, pollen, leaf, or root feeding



James L. Castner, U. Fla. Ent. Dep.



James E. Lloyd

Families of Coleoptera: beetles/weevils

Suborder Polyphaga

Chrysomelidae -- leaf and flea beetles/ rootworms

- Adults and larvae
leaf feeding;
specialists



Families of Coleoptera: beetles/weevils

Suborder Polyphaga

Curculionidae -- weevils or snout beetles

- Phytophagous, acorns



Name/Common Hosts/Flight periods

WEEVILS

Cryptorhynchus lapathi, Poplar and willow borer:

Willow, poplar, July-Aug.

Pissodes strobi, White pine weevil:

Spruce, March-May

White pine weevil larva



Families of Coleoptera: beetles/weevils

Suborder Polyphaga

Scolytidae -- bark and pine bark beetles

- Adults and larvae feed on sapwood under bark



UGA0364086a