

Insect Drawings from Keys to Orders & Groups

Adapted from: *Insect and Related Pests of Flowers and Foliage Plants*. Baker, J.R. ed. 1994 (revised). NC
Coop. Ext. Service publication AG-136.

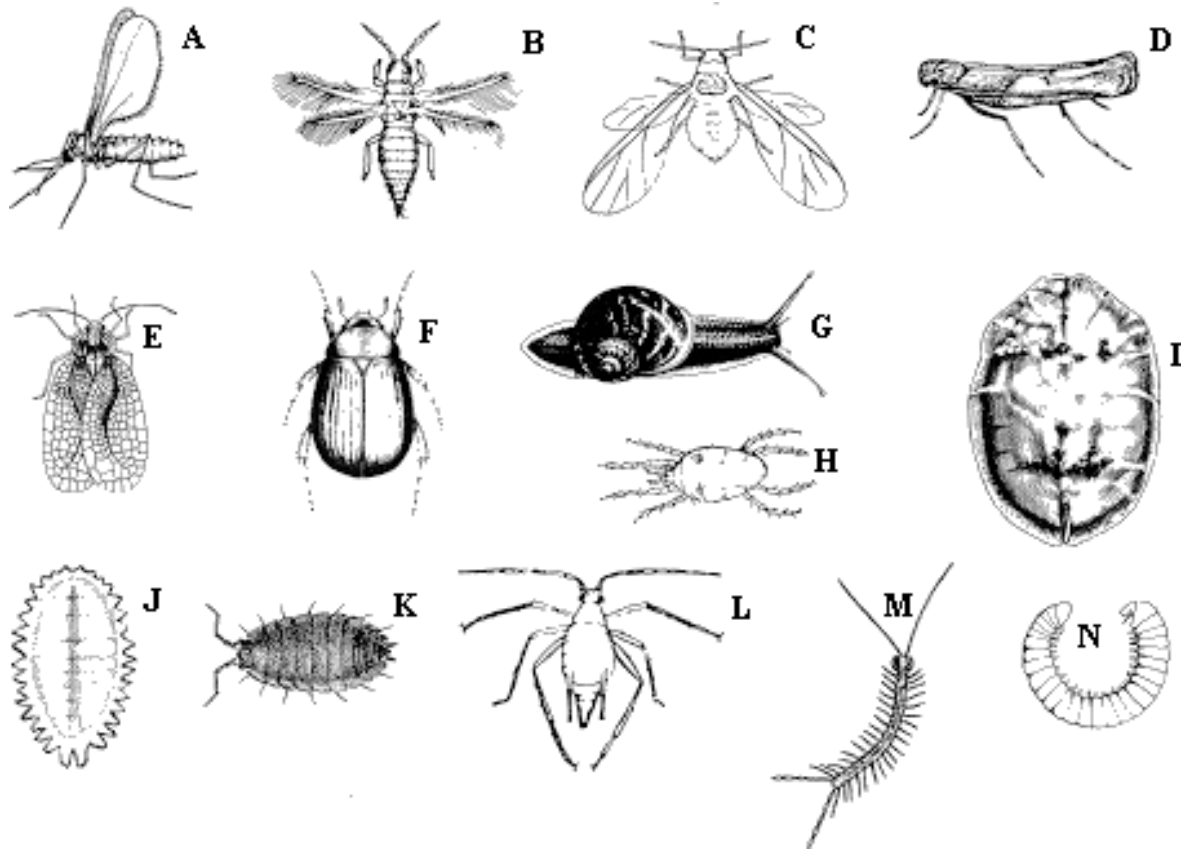


Fig. 59

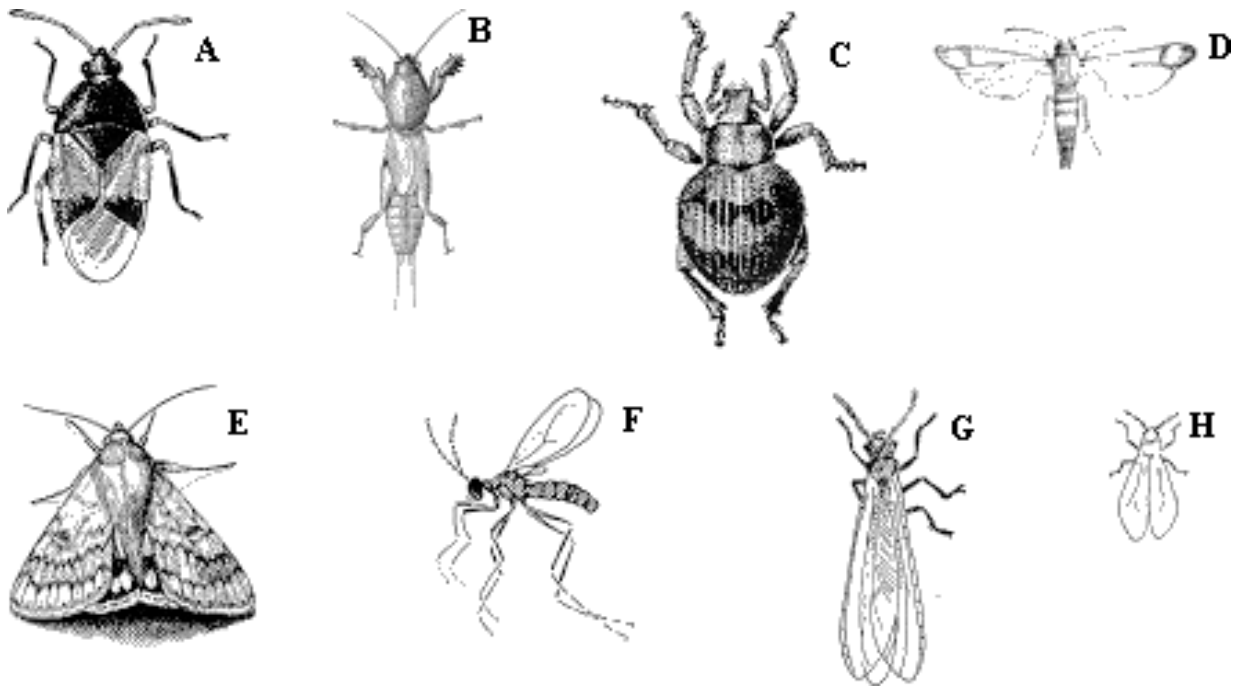


Fig. 60

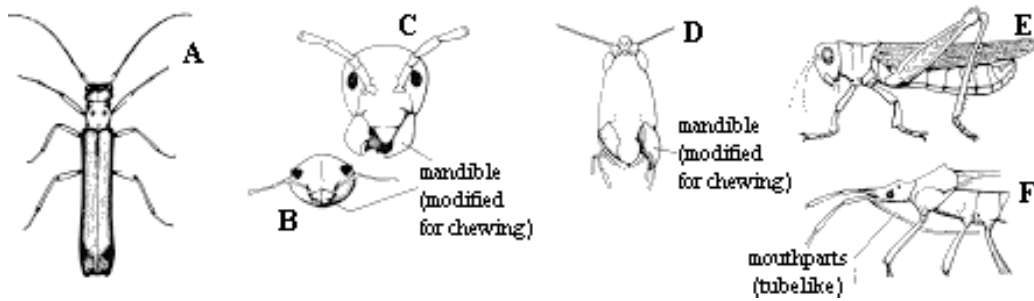


Fig. 61

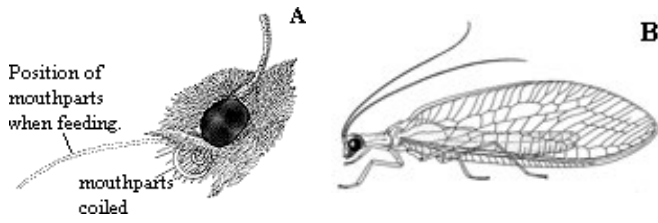


Fig. 62

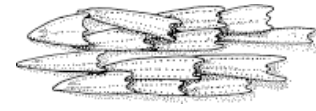


Fig. 63

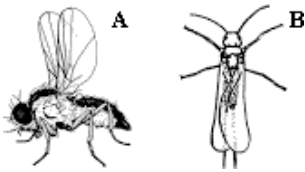


Fig. 64



Fig. 65

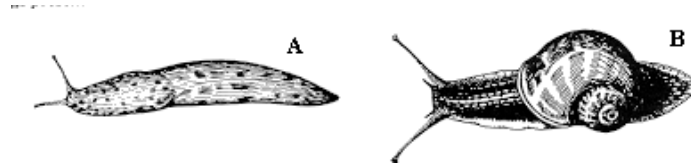


Fig. 66



Fig. 67



Fig. 68



Fig. 69



Fig. 70

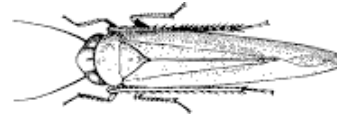


Fig. 71

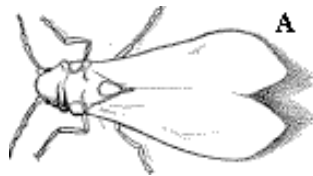


Fig. 72



Fig. 73

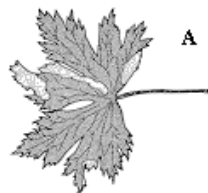


Fig. 74



Fig. 75

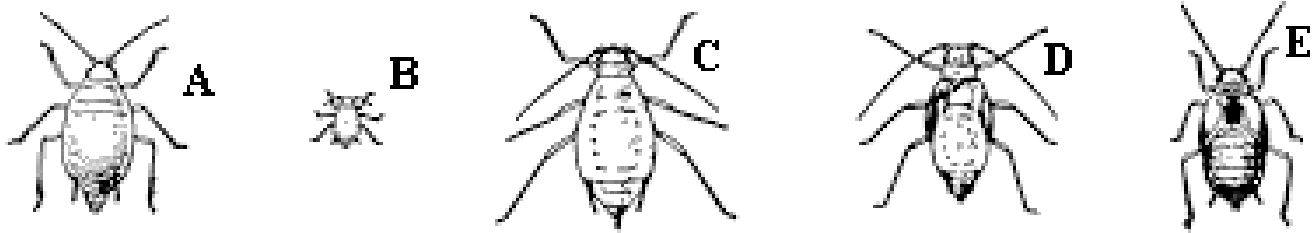
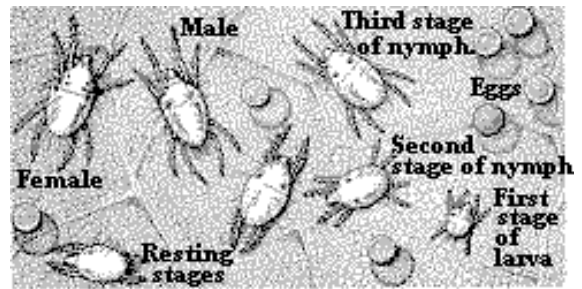


Fig. 76



Fig. 77



Stages of the two spotted spider mite.

Fig. 78

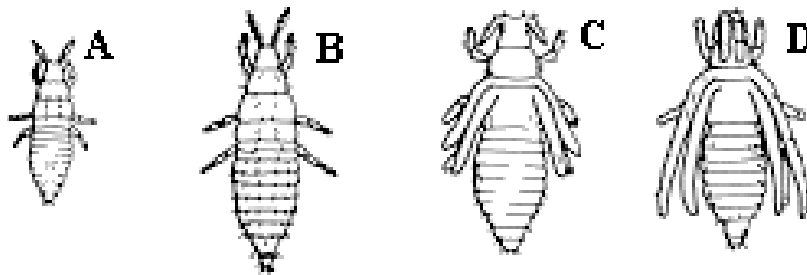


Fig. 79

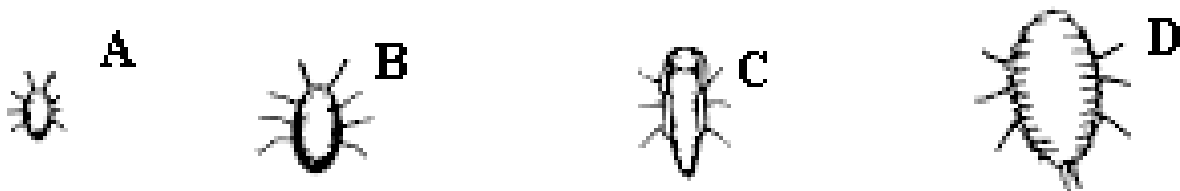


Fig. 80

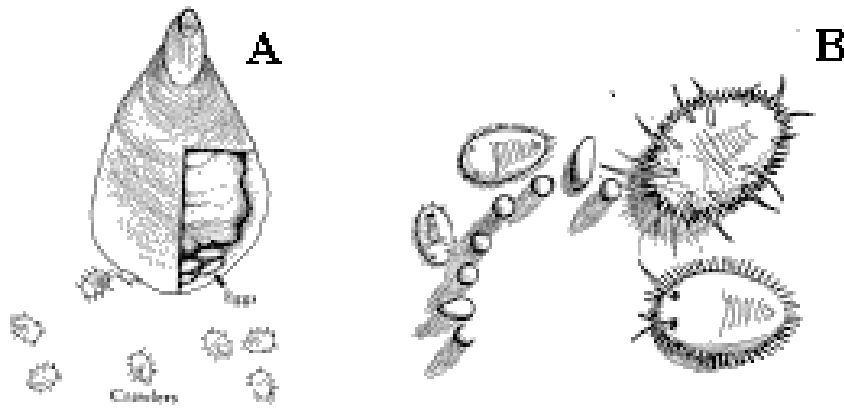


Fig. 81

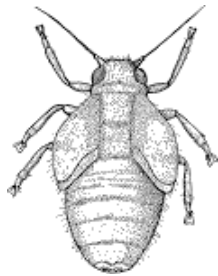


Fig. 82

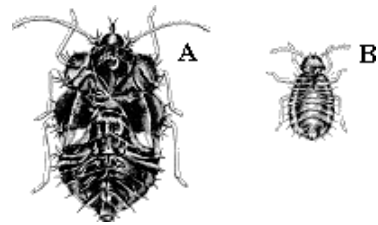


Fig. 83

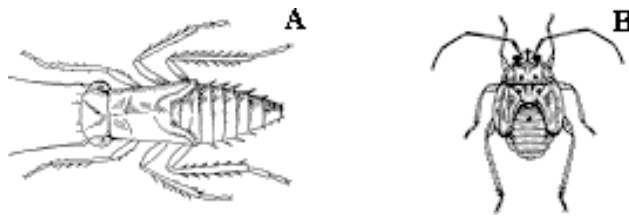


Fig. 84

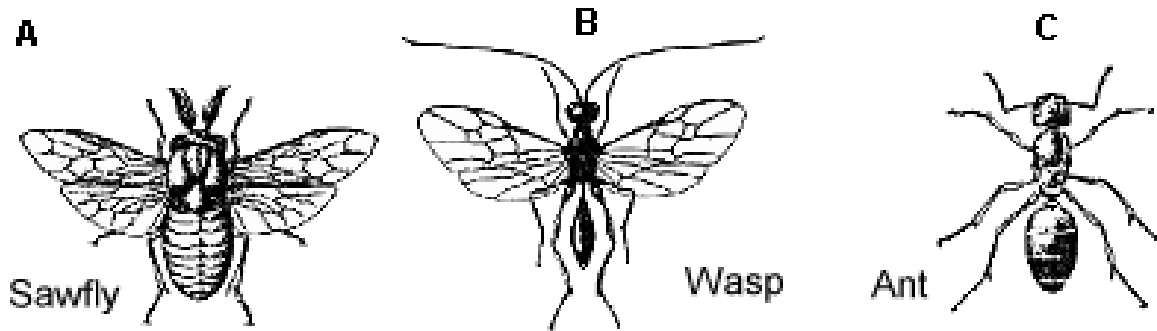


Fig. 85

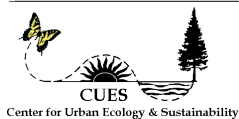


Fig. 86



Fig. 87

Krischik Lab
Dept. of Entomology
Saint Paul, MN 55108



UNIVERSITY OF MINNESOTA
EXTENSION



Legislative Citizen Commission
on Minnesota Resources (LCCMR)
Conservation Biocontrol 2017 - 2020